

National Equine Campus Masterplan Vision

h HORSE
RACING
IRELAND



RACE
Racing ACADEMY & Centre Of Education

equip

IRISH INJURED JOCKEYS



Fuelling Passion. Unlocking Progress.

The masterplan proposes a vision and framework for a National Equine Campus to further advance the Irish thoroughbred industry to new heights through innovative education and training.

The masterplan captures the ambition of Horse Racing Ireland to deliver a modern, state-of-the-art centre of excellence that champions the equine industry: fuelling passion and unlocking progress.



The masterplan has been developed based on **Seven Core Objectives**, which encompass the aspirations of Horse Racing Ireland to foster excellence in performance standards and improve industry attraction, recruitment and retention.

1 Rehabilitation and Support Services



2 Training and Education



3 Strengthening the Grassroots



4 International Growth and Development



5 Sustainability

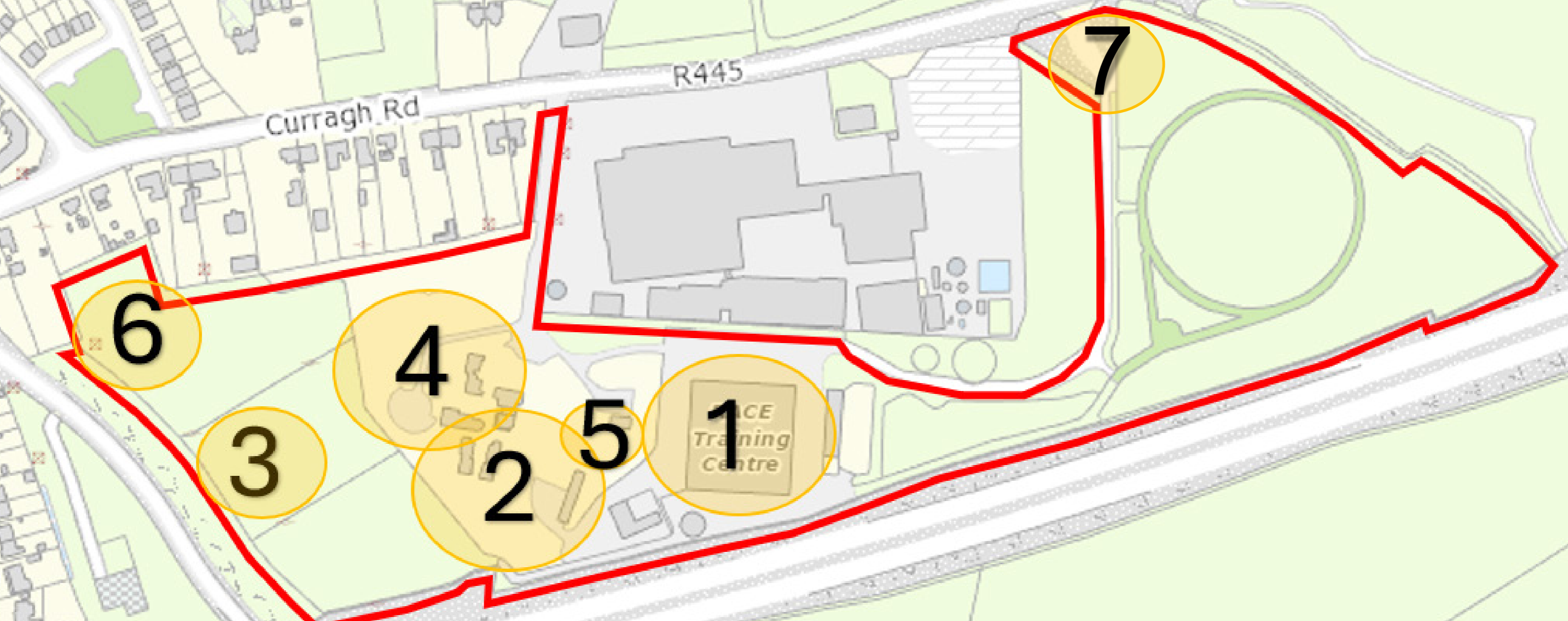


6 Welfare



7 Community





Campus Vision

The National Equine Campus will serve as a local, national and international centre for industry excellence. The campus will cultivate a new home to support the development and success of all participants in the industry - a focal point for the promotion of the sport through rehabilitation, training and education.

This will be achieved through the implementation of a masterplan that provides a framework for the delivery of a centre of excellence for the industry.

The masterplan will also cement Ireland's position as a global leader in the development of the people who support the industry along with maximising the potential of the campus for community use.

The campus will have a clear focus on the welfare of both human and equine participants and will reflect the heritage and history of the equine industry in Ireland. The masterplan establishes a new vision for the equine campus emphasising environmental responsibility and sustainability within the industry.

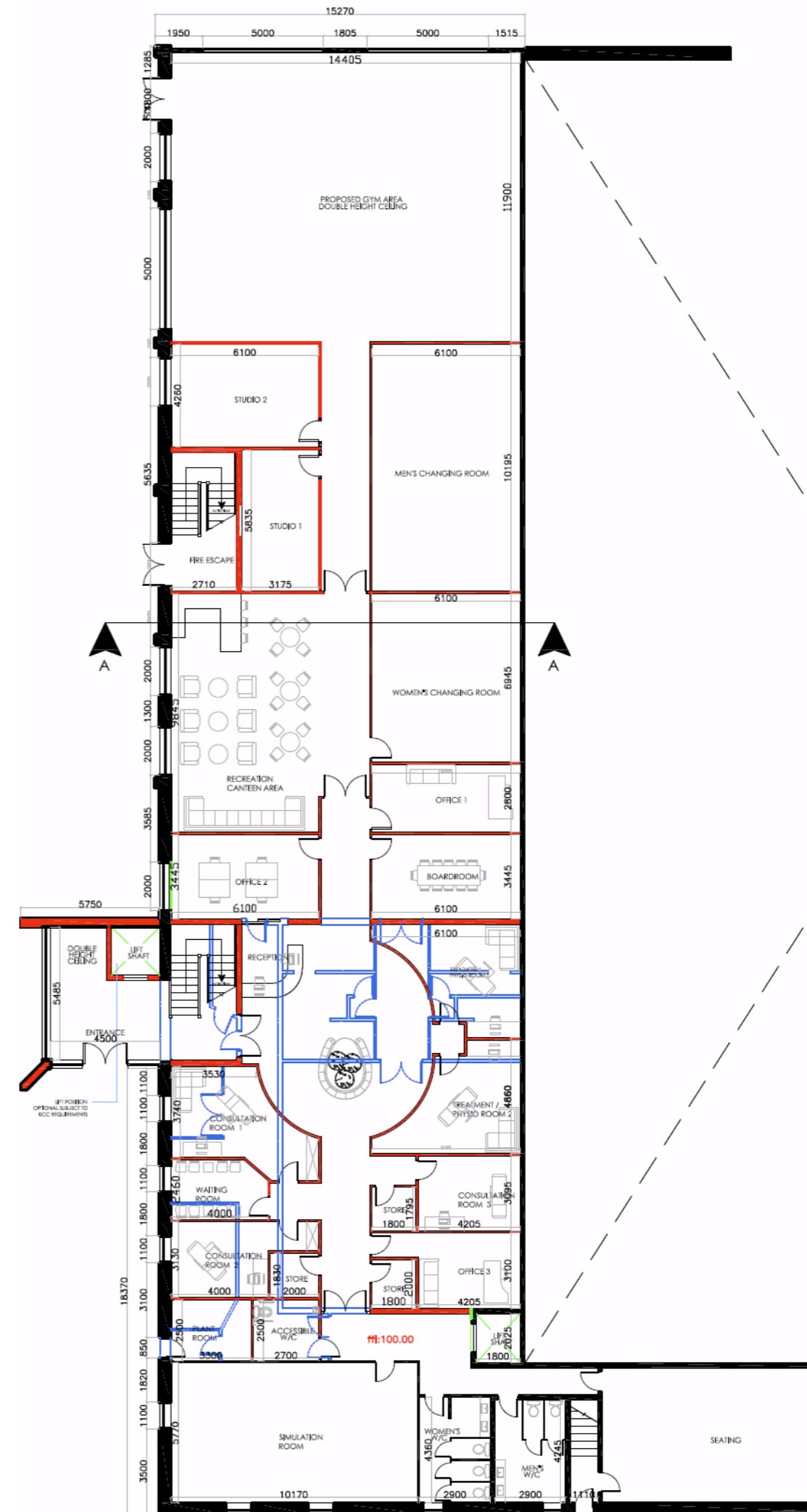
- 1 IJJ Rehabilitation Facility and High-Performance Unit/Innovation Hub.
- 2 Residential accommodation for domestic and international students.
- 3 New entrance.
- 4 Residential accommodation for domestic and international students.
- 5 Curragh House.
- 6 Community Development Space.
- 7 Resign existing vehicular entrance to include pedestrian and equine traffic-lighted crossing point to Curragh Plains.

Industry Rehabilitation and Support



A key focus and driving force in the development of the national equine campus will be the needs of industry participants. A centralised easily accessible campus providing a wide range of services. This will unlock high-performance and ensure the lives of industry participants both inside and outside their work are improved.

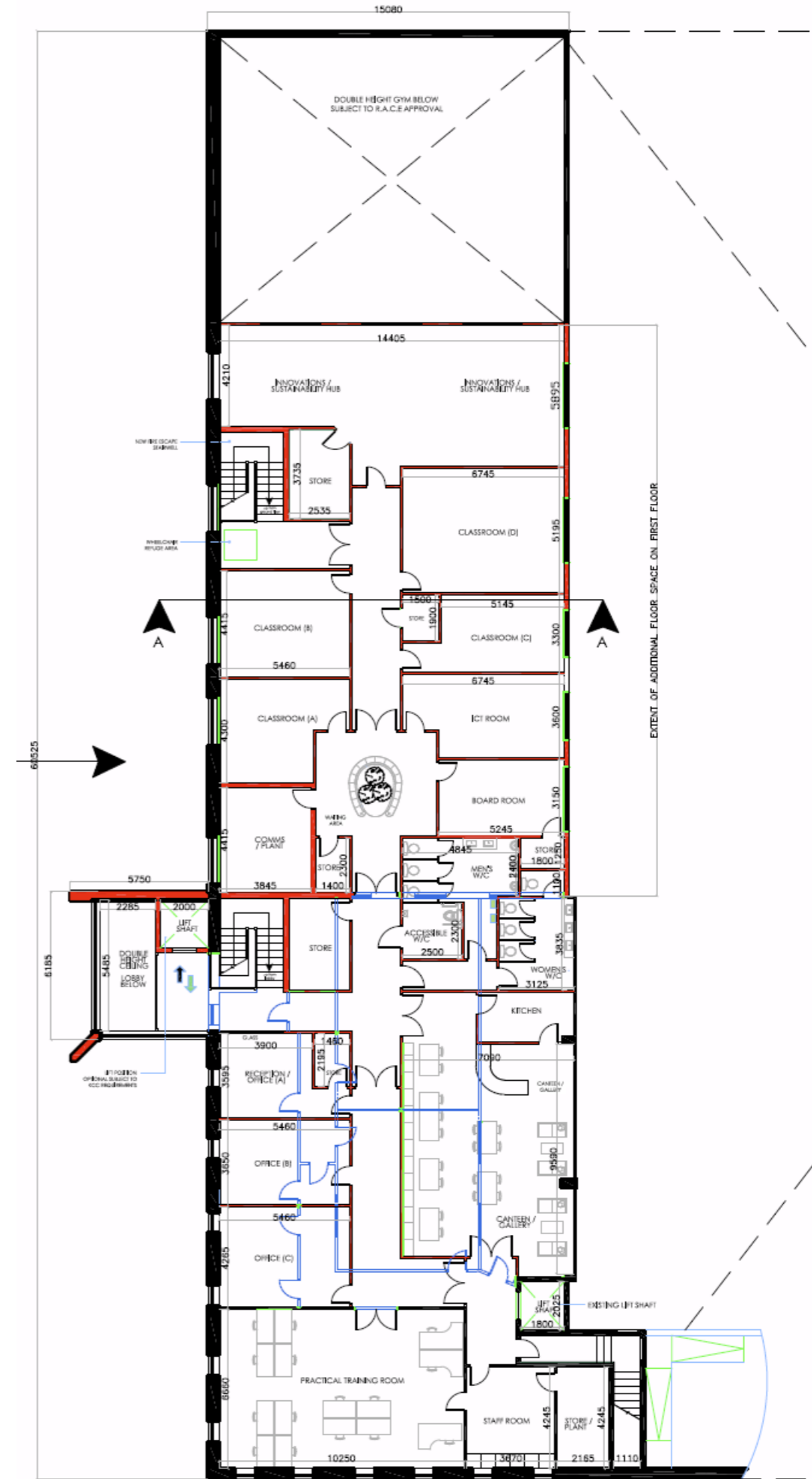
An array of training, well-being, clinical and relaxation facilities will be provided to suit the needs of individual participants. Through its people-centred approach, the campus will be a core facility for industry participants, providing a strong uniqueness and sense of ownership for the equine industry.



A Home for Education and Training

The equine campus will centralise training, education and development of industry participants. By creating a relevant, comprehensive integrated educational framework to include partnerships with third parties, industry participants can access tailored programmes aligned to the equine welfare agenda and future needs of the industry. With a focus on empowering individuals and advancing the industry as a whole, the campus reflects Ireland's leadership in equine sports while addressing the challenges of career stagnation and limited professional pathways.

A key cornerstone of the campus will be state of the art education and conferencing facilities to include high-tech classrooms, the latest learning technology, meeting rooms and breakout spaces. Encouraging positive personal development and an unparalleled learning experience to deliver exceptional outcomes inside and outside the classroom will enrich the education and training needs of the equine industry. This will be strengthened by an innovation hub, which will foster research and creativity to reflect the evolving nature of industry practices.





Strengthening the Grassroots

The masterplan will deliver an equine campus dedicated to and focusing on strengthening the grassroots of the equine industry. The vision creates a facility to recognise, foster and strengthen the expertise, knowledge and can-do approach of industry participants. Promoting diversity and inclusion and an industry for all, the campus will enhance the attraction and retention of a talent pipeline to support a sustainable workforce. Focusing on the needs of people employed in the industry by developing career pathways, improving employment standards and continued growth of the equine industry.

International Growth and Development

Ireland finds itself amongst the global leaders in horse racing and the third largest producer of thoroughbreds in the world creating a strong demand for education and training from international students. The masterplan provides residential accommodation within the grounds of the national equine campus enhancing the appeal and accessibility for international students.

Through its tailored training programs, the campus aims to unlock new opportunities for individuals and enhance the global competitiveness of Irish equine sports. A culturally rich training environment positions the campus as a forward-thinking, inclusive facility strengthening our international links and cultivating international growth and development.



Sustainability

Horse Racing Ireland has a responsibility to contribute to Ireland's international commitment to reduce emissions and become a recognised leader in sustainability.

The development of the campus will play a key role in leading and preparing the equine industry for a sustainable future – protecting the land that serves our industry and providing guidance for change to an even better place. The masterplan vision seeks to embed environmental leadership into the campus through sustainable development of existing buildings, water and energy consumption, waste management practices, solar panels and sustainable transportation to protect and enhance our national environment.

Welfare

EQUINE

The equine campus will support Horse Racing Ireland's priority to cultivate a culture of zero compromise in equine safety and care standards across three pillars: Standards, Traceability and Safety Nets. The campus will nurture the existing high levels of racehorse care and the passion of those involved in the industry for the horse. Delivering continuous education and training methods for current and new industry participants on required standards, the importance of equine welfare and their duty of care will further increase awareness, understanding and the perception of equine welfare nationally. The campus will have excellence as a core value and will create opportunities to showcase exceptional horse care.

PEOPLE

The masterplan will deliver a campus aimed at prioritising the welfare of people employed in the equine industry by providing a range of resources committed to growth and overall wellness. Focusing on promoting an industry where wellbeing is valued through access to information, support services and training, the National Equine Campus will offer accessible resources for those in need of assistance to foster a healthy work-life balance.



Community

The masterplan envisages potential development of Curragh House to an Equine Visitor Centre within the campus, feeding into tourism footfall and connecting with the Kildare Heritage Trail, Kildare Village, Curragh Racecourse and Irish National Stud.

The masterplan envisages future development of recreational facilities that will invigorate the campus and promote recreational and leisure activity to the wider community. Empowering the community to get involved through a range of proposed facilities and creating space for all ages and abilities. A proposed new access road and entrance closer to Kildare Town will improve community accessibility through walkways and public transport and encourage visitors to the campus.

Securing funding from various sources, including KCC's Sports Partnership programs, will be essential for the success of these initiatives.





Delivery

The campus masterplan will be realised through an integrated funding mechanism over the next five years. Individual buildings and infrastructure will be delivered through a series of phases to meet specific milestones. The detail of each phase has been defined by the specific needs of the industry.

PHASING

Rehabilitation and education facilities along with selected residential accommodation will be completed in Phase One. The remainder of residential accommodation, administration, and the redeveloped Curragh House will be completed in Phase Two. Phase Three will include a new entrance and community recreational facilities.



equip

